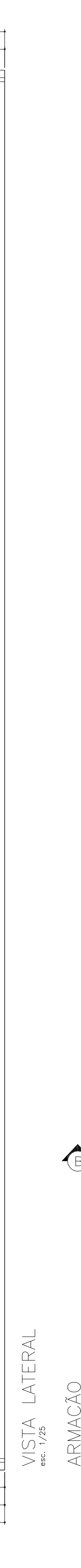
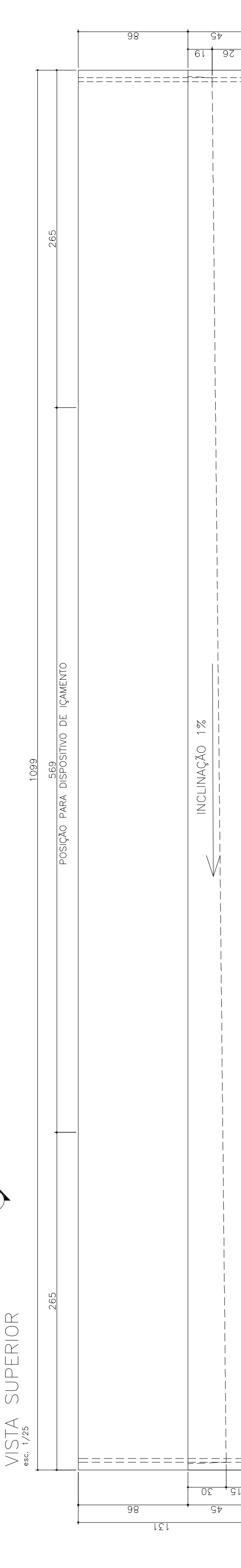
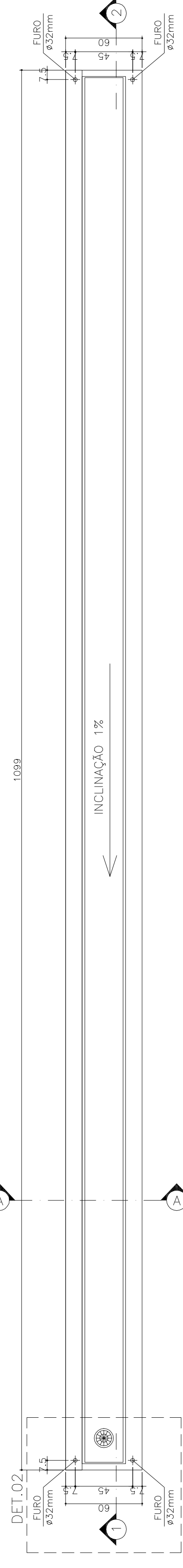


CALHA VC09 60x131 - (1x)
 VOLUME UNIT=3,79m³
 PESO UNIT=3,240kg

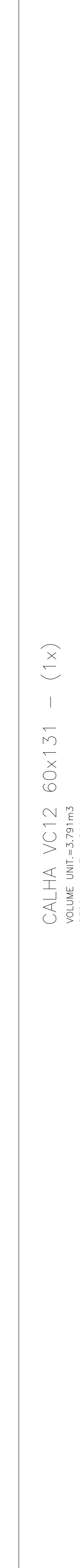
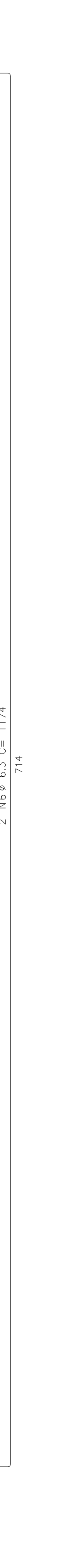
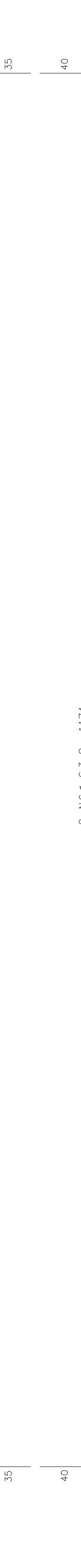
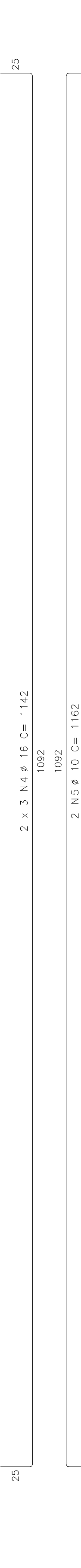
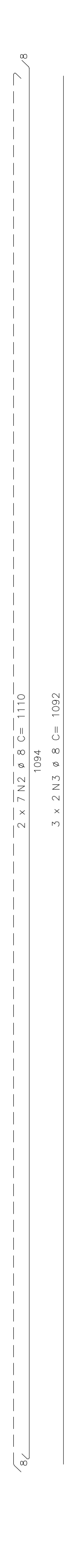
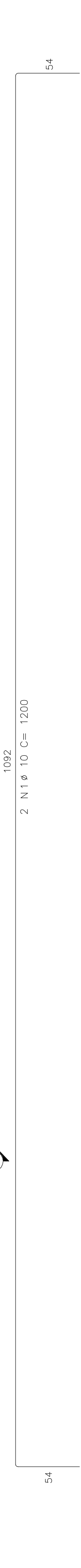
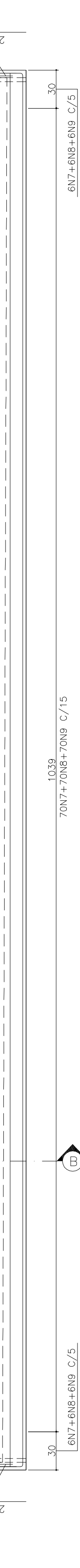


LISTA DE FERROS

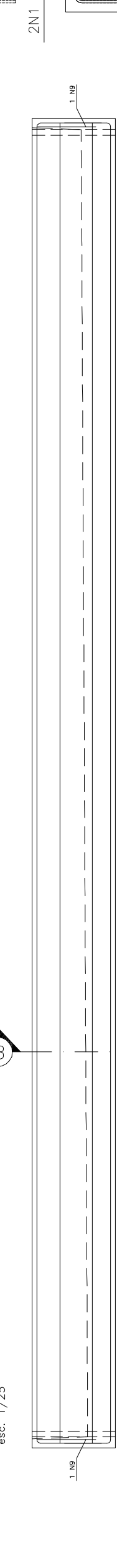
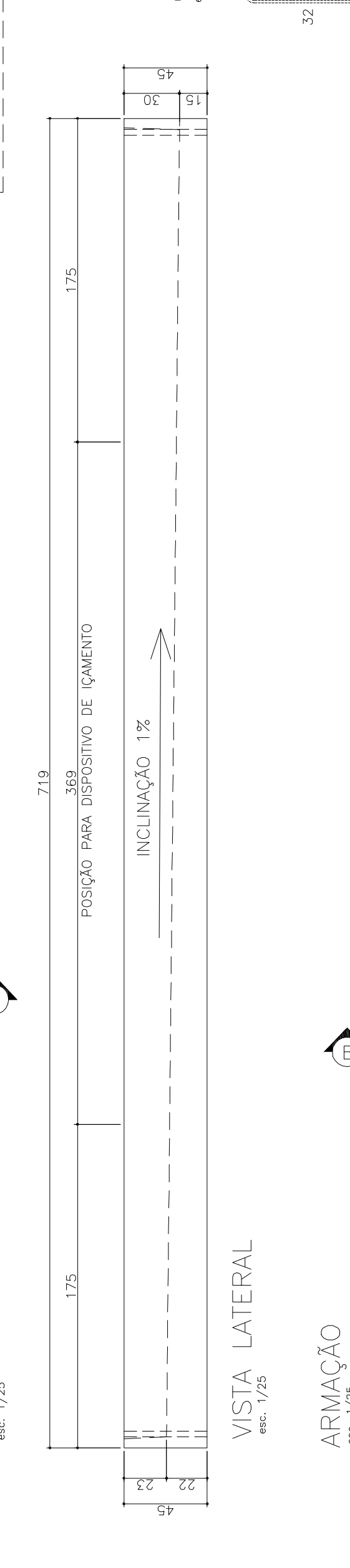
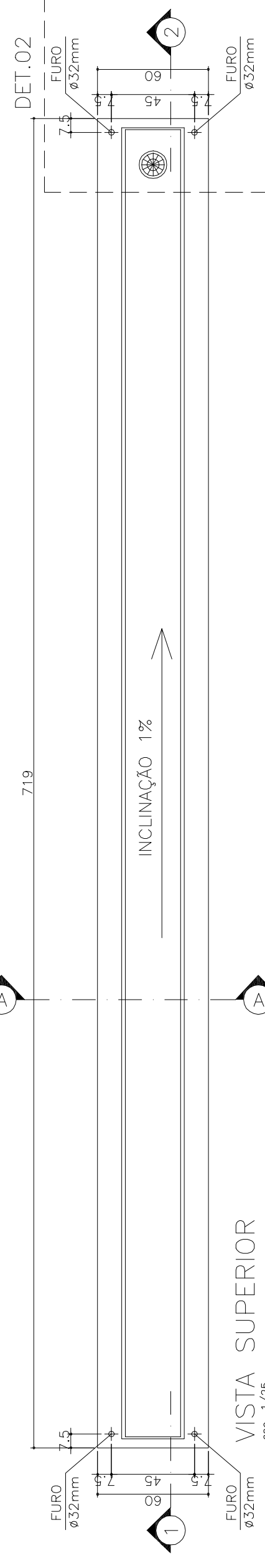
Rep	POS.	Ø	UNIT (cm)	TOTAL (m)	COMPRIMENTOS
1	10	2	1000	24	
2	8	16	1000	65,52	
3	4	16	6	1142	65,52
4	5	10	2	1162	22,24
5	6	6,3	2	1174	25,48
6	8	6,3	82	108	86,56
7	8	6,3	108	108	86,56
8	8	16	VAR.	141,04	
9	10	8	2	110	2,38
10	8	2	110	110	2,38
11	10	8	2	110	2,38
12	10	8	2	110	2,38

RESUMO AÇO CAIXA

Ø	COMPRIMENTO	PESO (Kg)
6,3	341,94	80
8	386,74	147
10	47,24	30
16	65,52	110
TOTAL		372



CALHA VC07 - (1x)
 VOLUME UNIT=1,29m³
 PESO UNIT=3,240kg

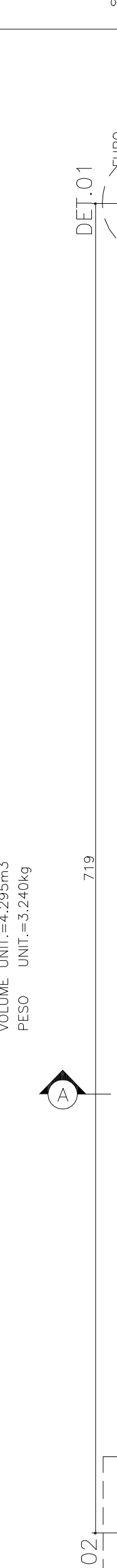
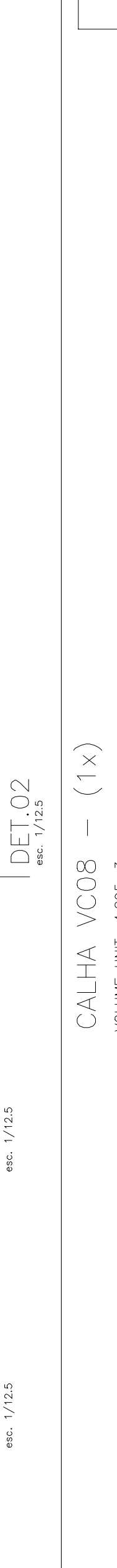
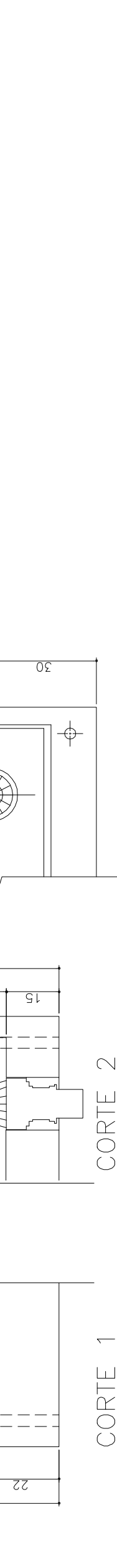
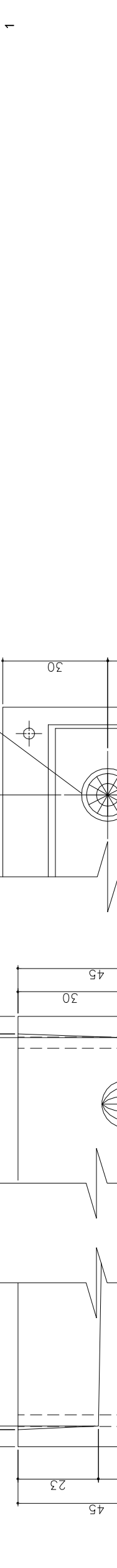
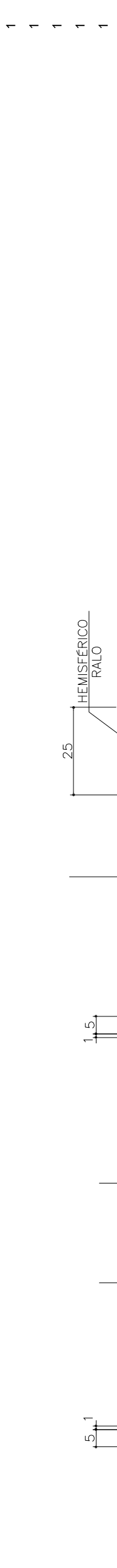
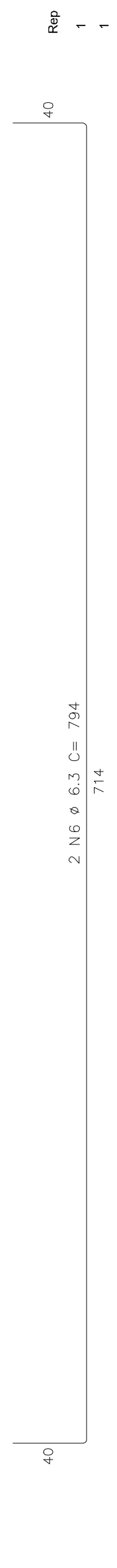
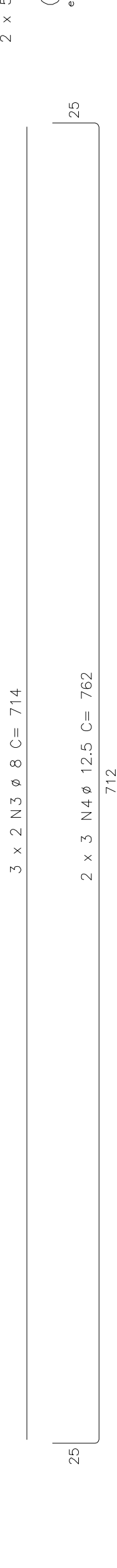


LISTA DE FERROS

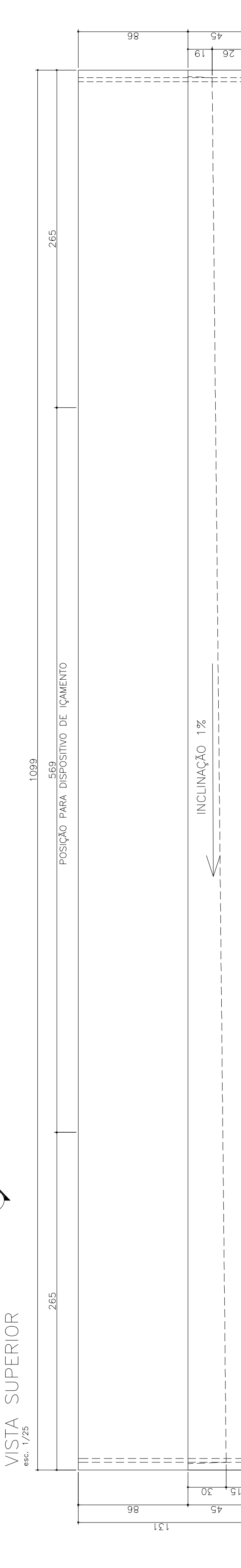
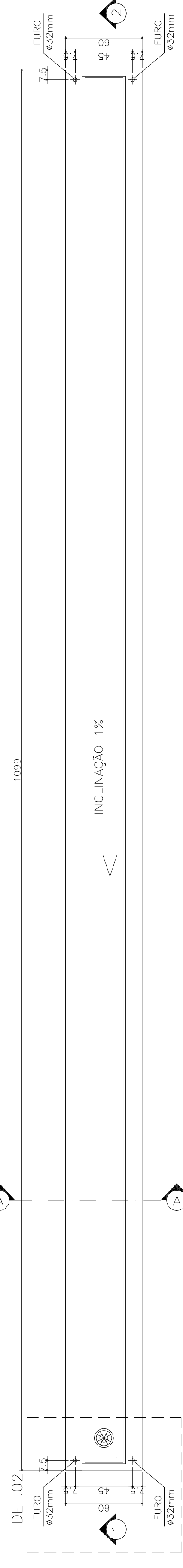
Rep	POS.	Ø	UNIT (cm)	TOTAL (m)	COMPRIMENTOS
1	10	2	1000	24	
2	8	16	1000	65,52	
3	4	16	6	1142	65,52
4	5	10	2	1162	22,24
5	6	6,3	2	1174	25,48
6	8	6,3	82	108	86,56
7	8	6,3	108	108	86,56
8	8	16	VAR.	141,04	
9	10	8	2	110	2,38
10	8	2	110	110	2,38
11	10	8	2	110	2,38
12	10	8	2	110	2,38

RESUMO AÇO CAIXA

Ø	COMPRIMENTO	PESO (Kg)
6,3	146,84	34
8	168,96	68
10	31,28	20
12,5	45,72	46
TOTAL		168



CALHA VC08 60x131 - (1x)
 VOLUME UNIT=3,79m³
 PESO UNIT=3,240kg

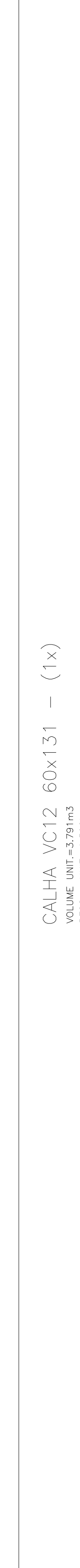
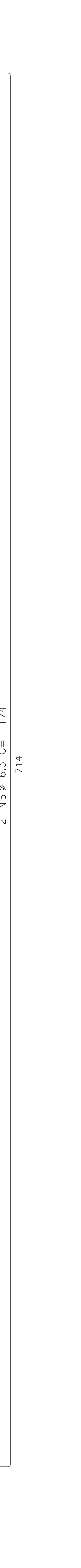
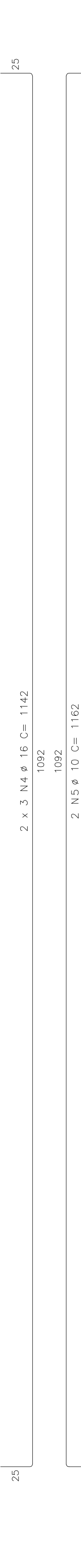
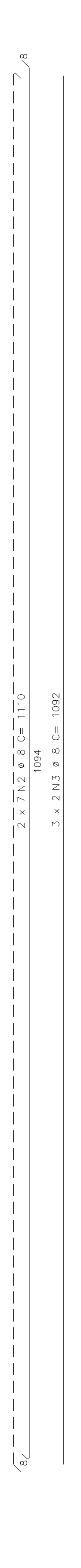
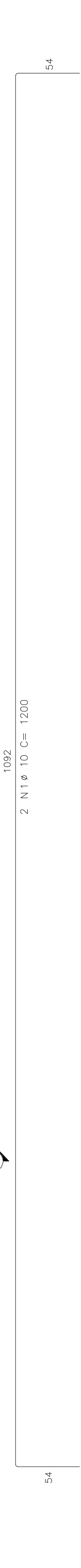
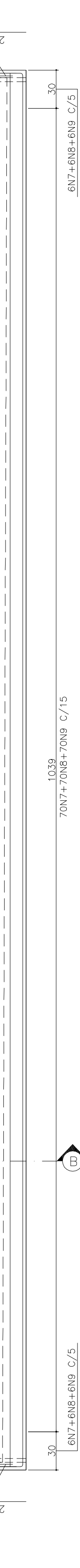


LISTA DE FERROS

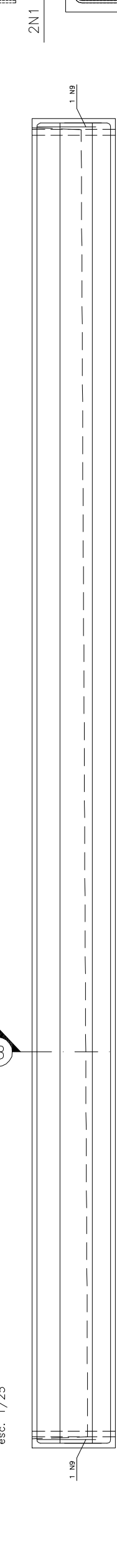
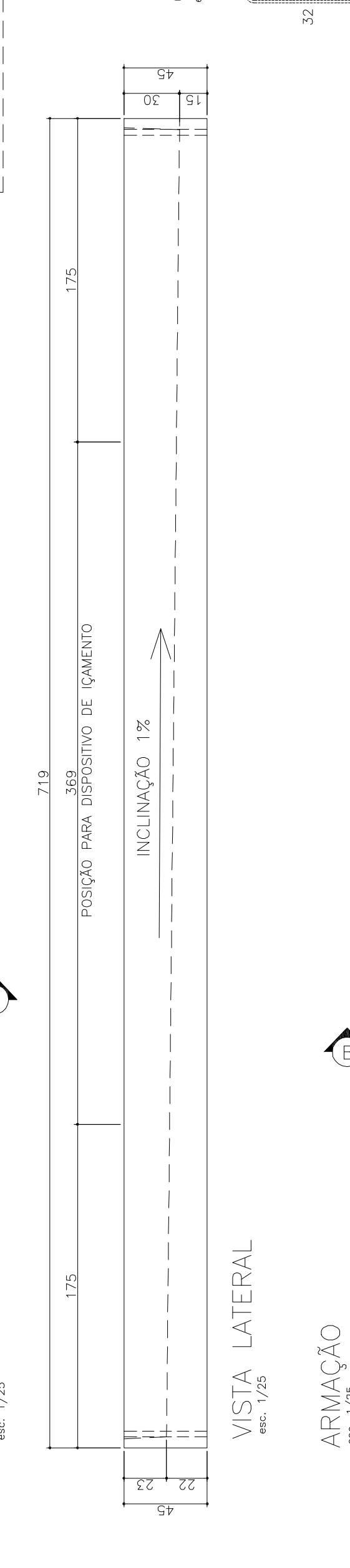
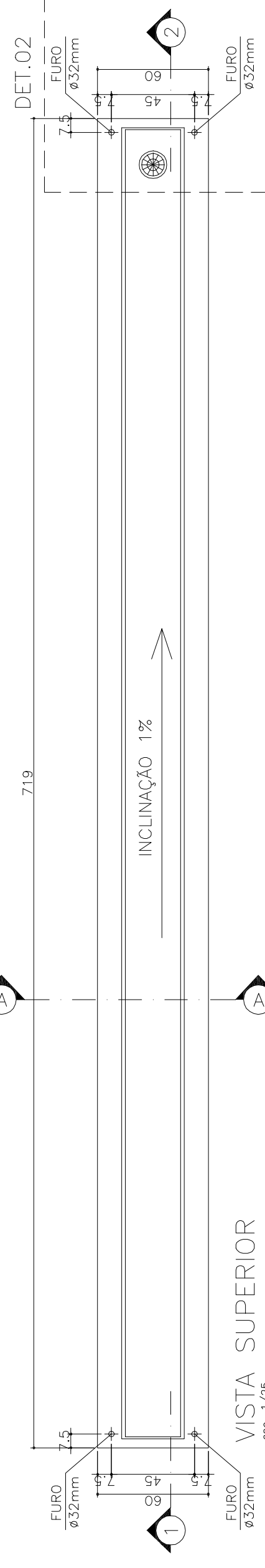
Rep	POS.	Ø	UNIT (cm)	TOTAL (m)	COMPRIMENTOS
1	10	2	1000	24	
2	8	16	1000	65,52	
3	4	16	6	1142	65,52
4	5	10	2	1162	22,24
5	6	6,3	2	1174	25,48
6	8	6,3	82	108	86,56
7	8	6,3	108	108	86,56
8	8	16	VAR.	141,04	
9	10	8	2	110	2,38
10	8	2	110	110	2,38
11	10	8	2	110	2,38
12	10	8	2	110	2,38

RESUMO AÇO CAIXA

Ø	COMPRIMENTO	PESO (Kg)
6,3	341,94	80
8	386,74	147
10	47,24	30
16	65,52	110
TOTAL		372



CALHA VC09 60x131 - (1x)
 VOLUME UNIT=3,79m³
 PESO UNIT=3,240kg

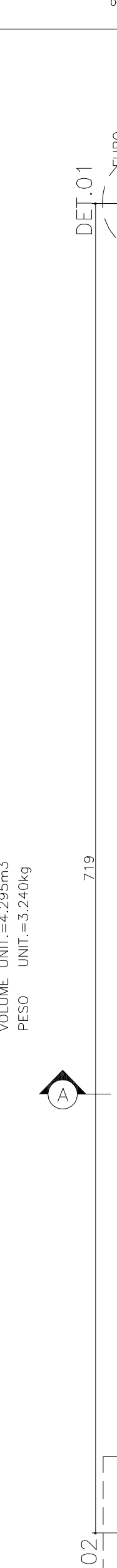
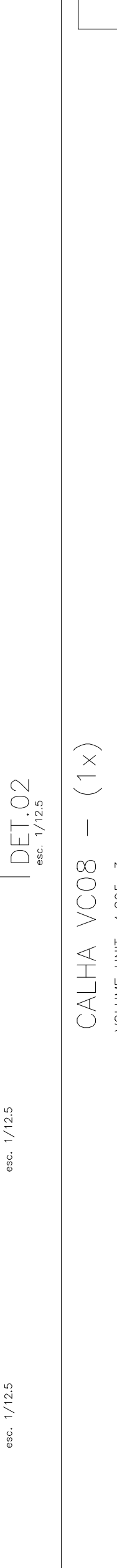
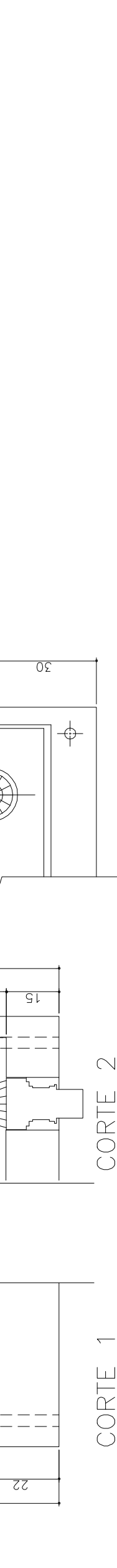
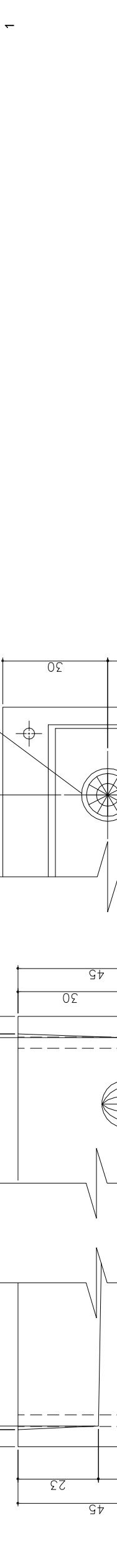
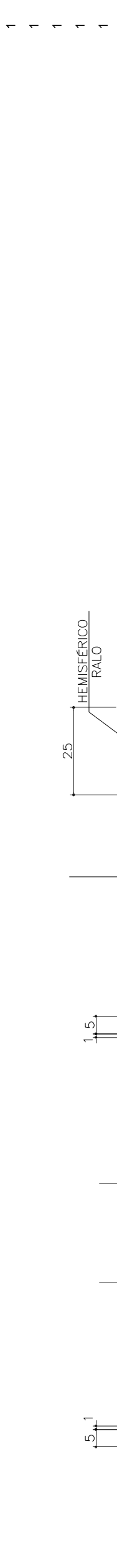
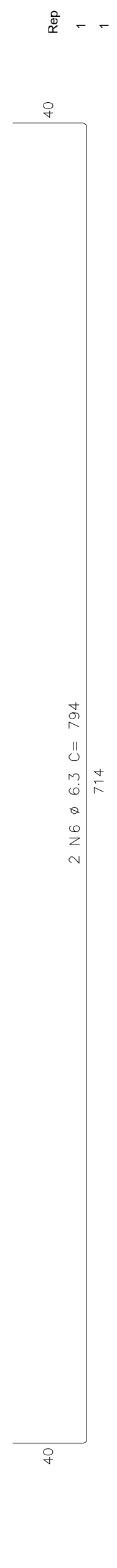
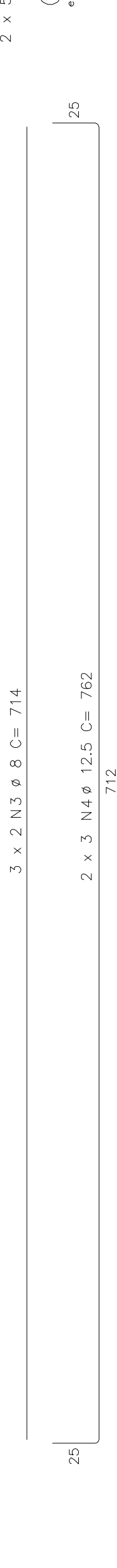


LISTA DE FERROS

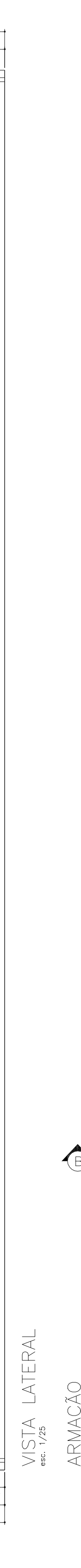
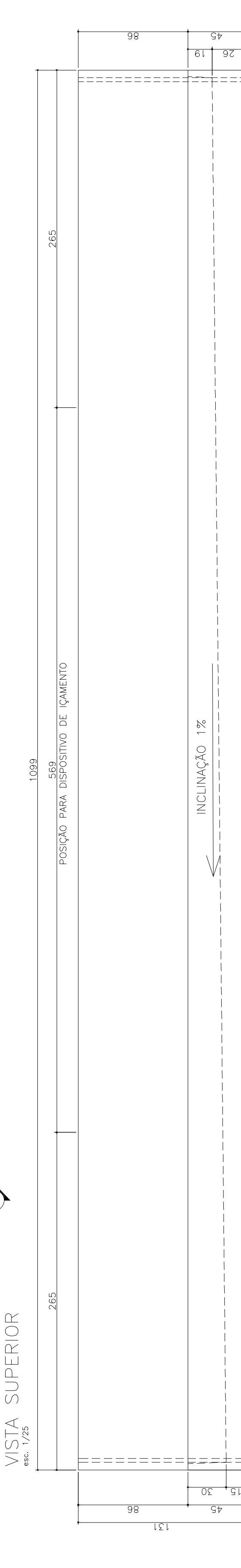
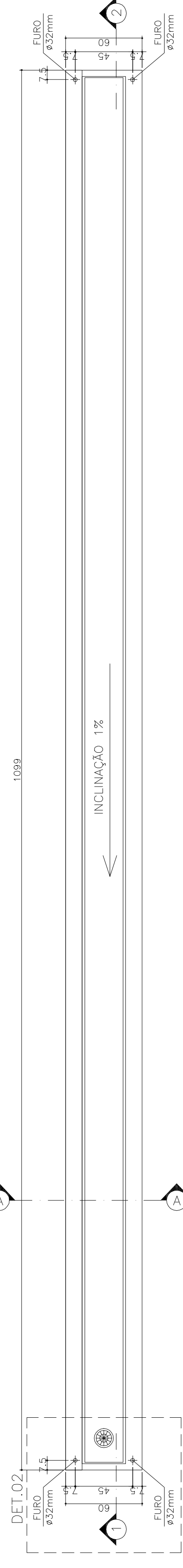
Rep	POS.	Ø	UNIT (cm)	TOTAL (m)	COMPRIMENTOS
1	10	2	1000	24	
2	8	16	1000	65,52	
3	4	16	6	1142	65,52
4	5	10	2	1162	22,24
5	6	6,3	2	1174	25,48
6	8	6,3	82	108	86,56
7	8	6,3	108	108	86,56
8	8	16	VAR.	141,04	
9	10	8	2	110	2,38
10	8	2	110	110	2,38
11	10	8	2	110	2,38
12	10	8	2	110	2,38

RESUMO AÇO CAIXA

Ø	COMPRIMENTO	PESO (Kg)
6,3	341,94	80
8	386,74	147
10	47,24	30
16	65,52	110
TOTAL		372



CALHA VC12 60x131 - (1x)
 VOLUME UNIT=3,79m³
 PESO UNIT=3,240kg

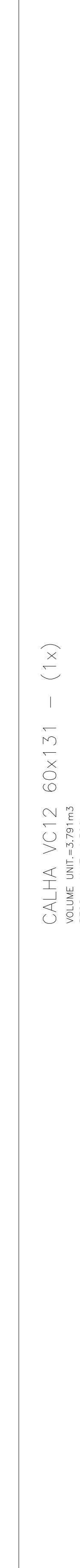
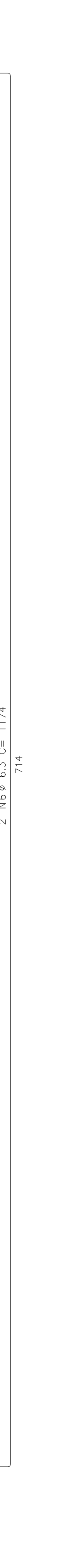
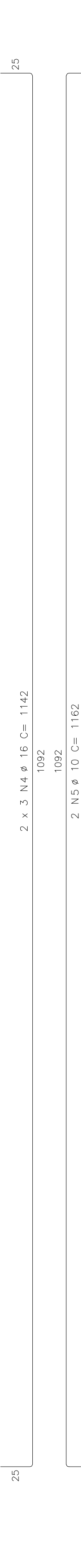
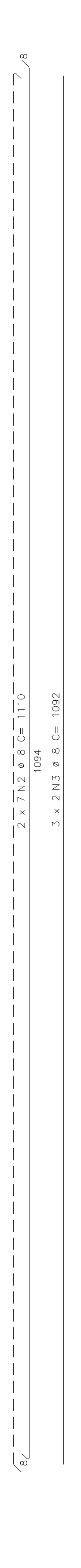
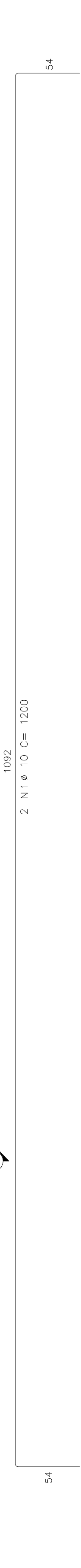
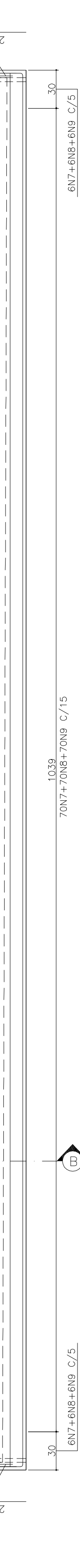


LISTA DE FERROS

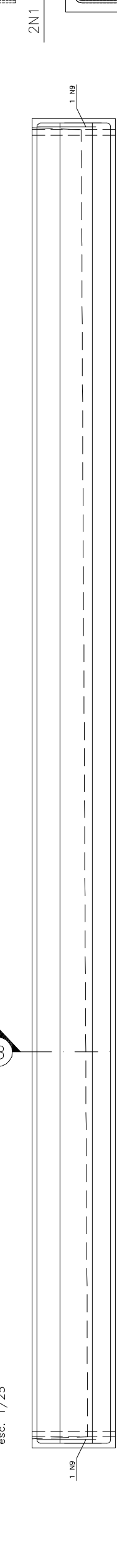
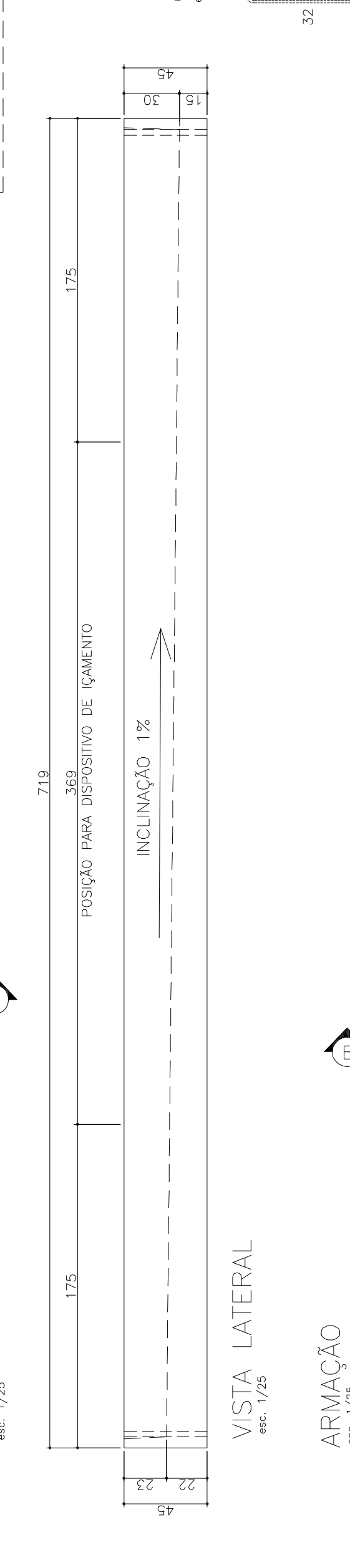
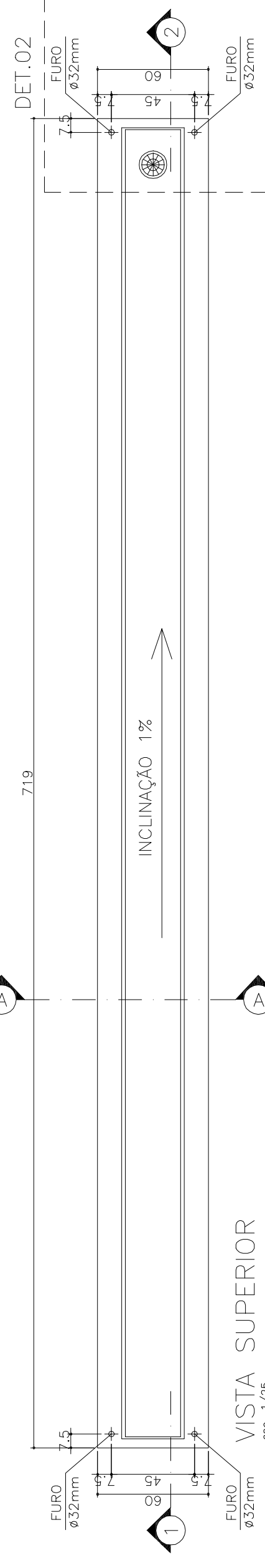
Rep	POS.	Ø	UNIT (cm)	TOTAL (m)	COMPRIMENTOS
1	10	2	1000	24	
2	8	16	1000	65,52	
3	4	16	6	1142	65,52
4	5	10	2	1162	22,24
5	6	6,3	2	1174	25,48
6	8	6,3	82	108	86,56
7	8	6,3	108	108	86,56
8	8	16	VAR.	141,04	
9	10	8	2	110	2,38
10	8	2	110	110	2,38
11	10	8	2	110	2,38
12	10	8	2	110	2,38

RESUMO AÇO CAIXA

Ø	COMPRIMENTO	PESO (Kg)
6,3	341,94	80
8	386,74	147
10	47,24	30
16	65,52	110
TOTAL		372



CALHA VC08 60x131 - (1x)
 VOLUME UNIT=3,79m³
 PESO UNIT=3,240kg

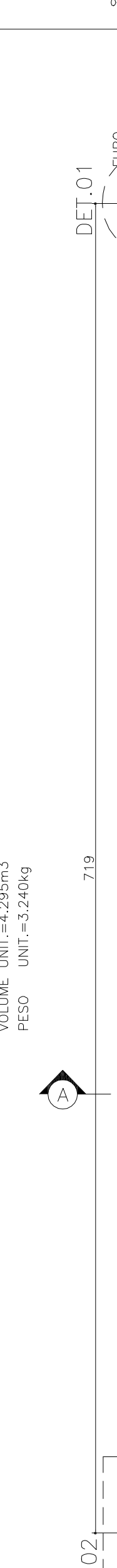
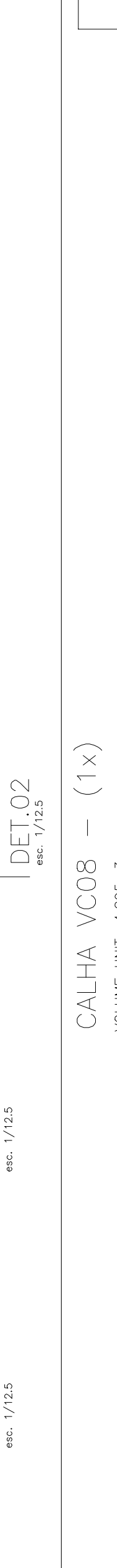
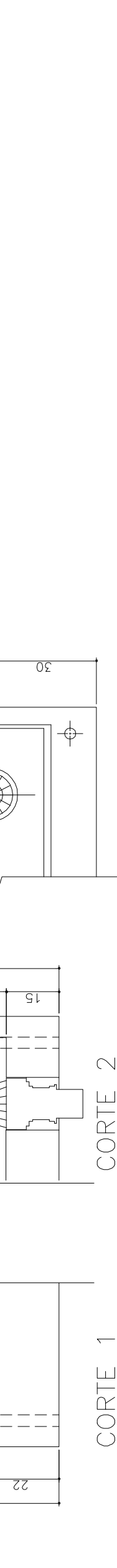
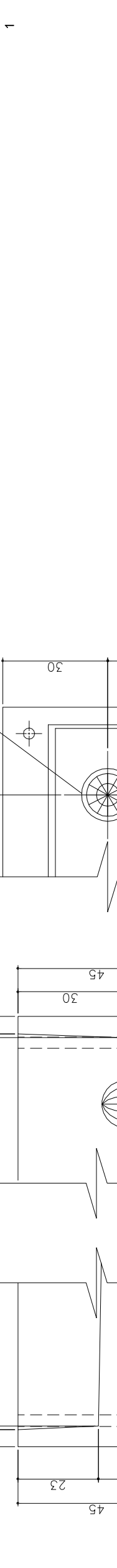
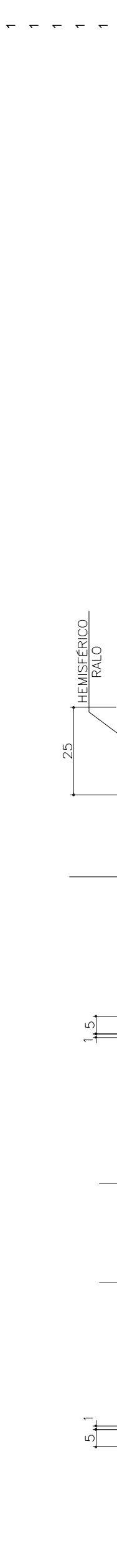
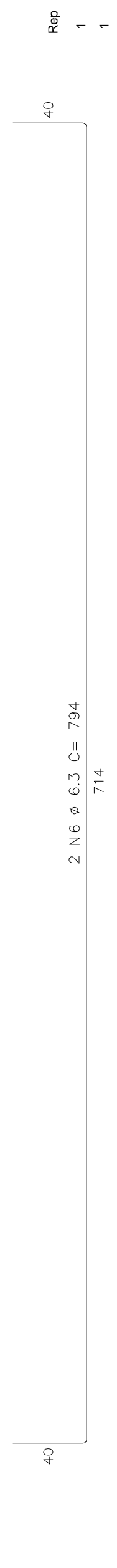
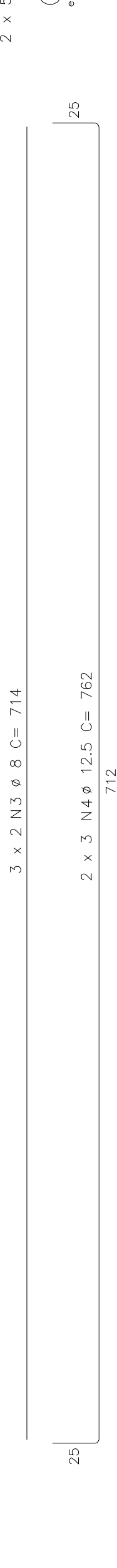


LISTA DE FERROS

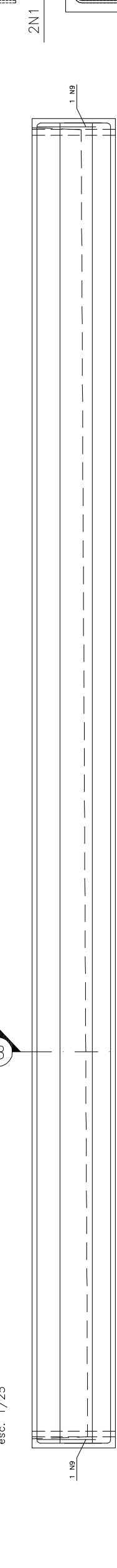
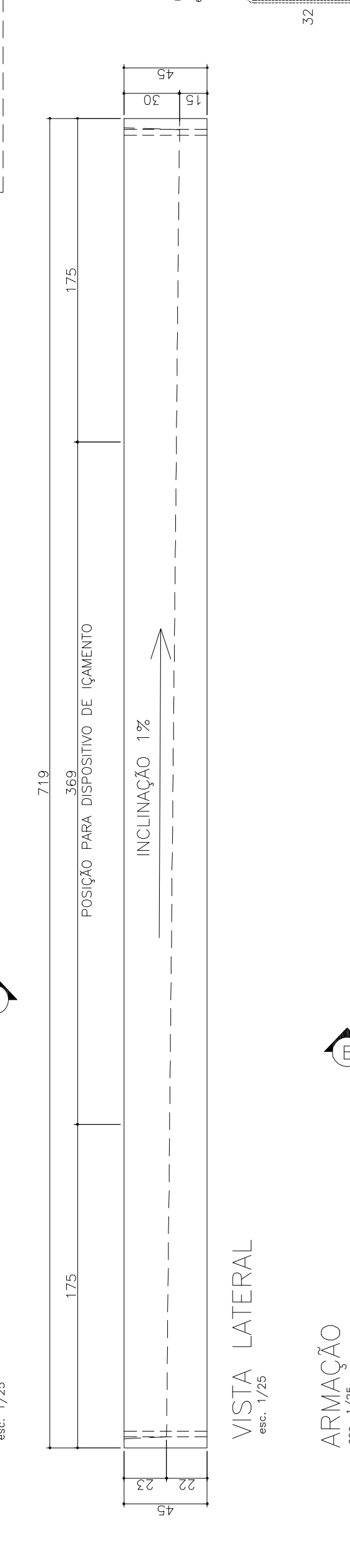
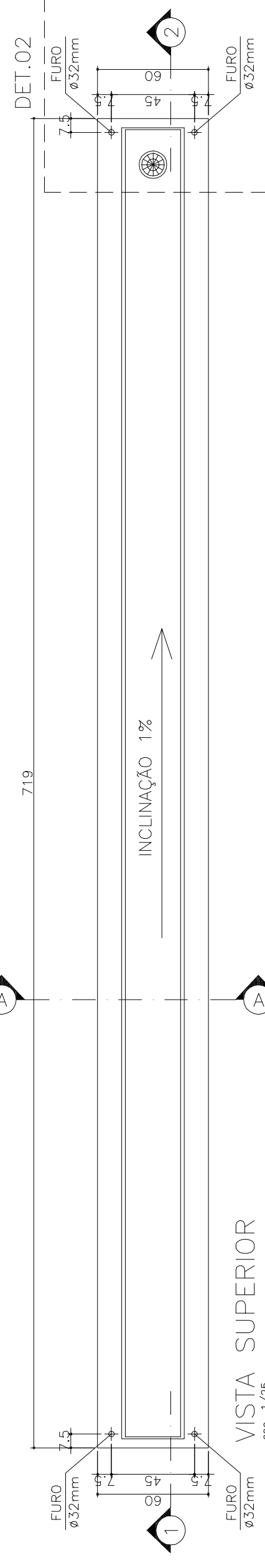
Rep	POS.	Ø	UNIT (cm)	TOTAL (m)	COMPRIMENTOS
1	10	2	1000	24	
2	8	16	1000	65,52	
3	4	16	6	1142	65,52
4	5	10	2	1162	22,24
5	6	6,3	2	1174	25,48
6	8	6,3	82	108	86,56
7	8	6,3	108	108	86,56
8	8	16	VAR.	141,04	
9	10	8	2	110	2,38
10	8	2	110	110	2,38
11	10	8	2	110	2,38
12	10	8	2	110	2,38

RESUMO AÇO CAIXA

Ø	COMPRIMENTO	PESO (Kg)
6,3	341,94	80
8	386,74	147
10	47,24	30
16	65,52	110
TOTAL		372



CALHA VC09 60x131 - (1x)
 VOLUME UNIT=3,79m³
 PESO UNIT=3,240kg

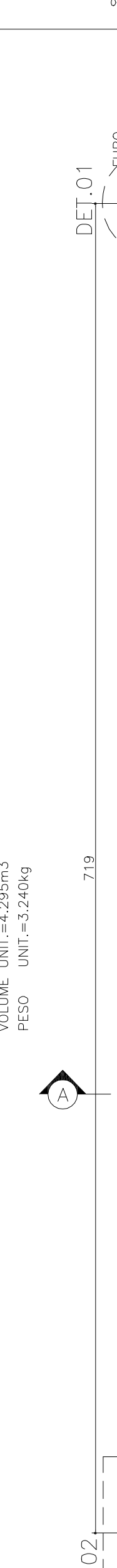
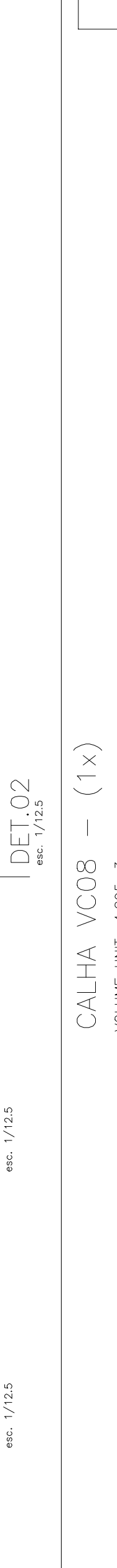
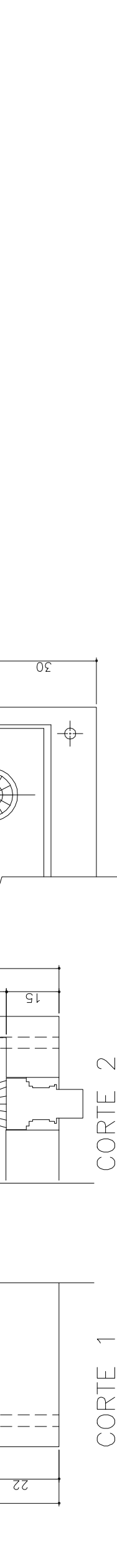
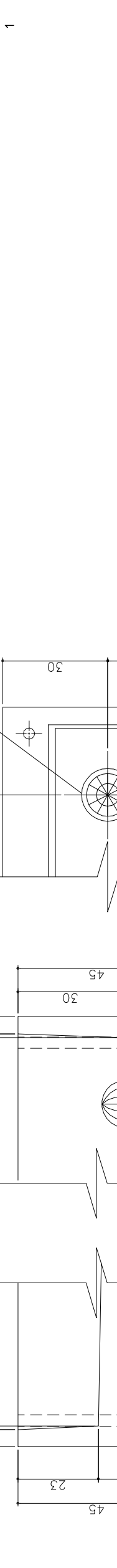
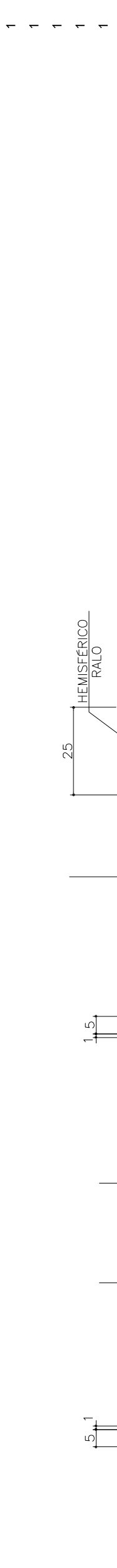
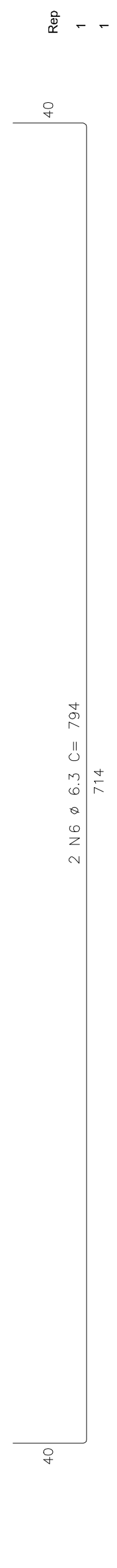
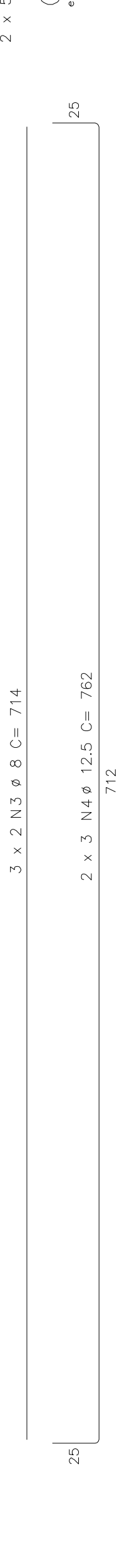


LISTA DE FERROS

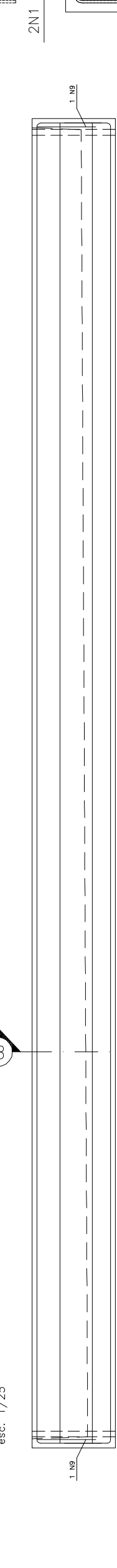
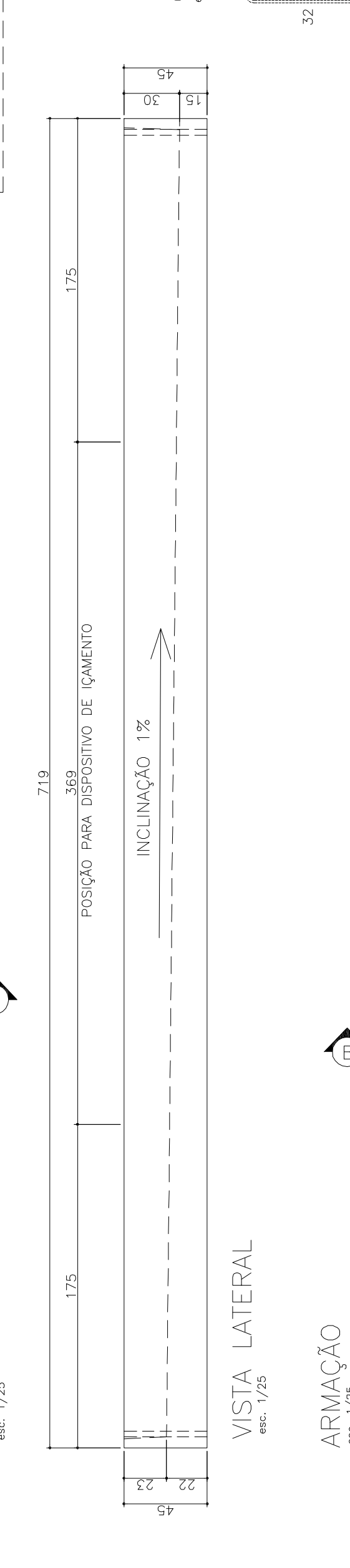
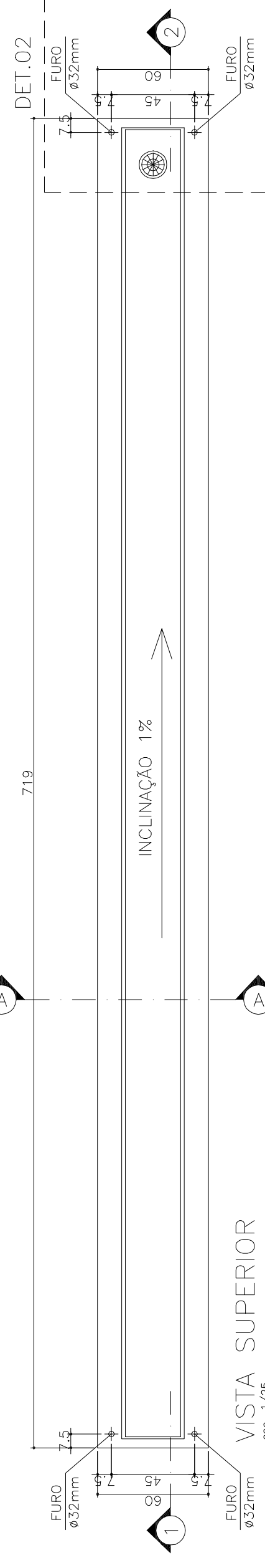
Rep	POS.	Ø	UNIT (cm)	TOTAL (m)	COMPRIMENTOS
1	10	2	1000	24	
2	8	16	1000	65,52	
3	4	16	6	1142	65,52
4	5	10	2	1162	22,24
5	6	6,3	2	1174	25,48
6	8	6,3	82	108	86,56
7	8	6,3	108	108	86,56
8	8	16	VAR.	141,04	
9	10	8	2	110	2,38
10	8	2	110	110	2,38
11	10	8	2	110	2,38
12	10	8	2	110	2,38

RESUMO AÇO CAIXA

Ø	COMPRIMENTO	PESO (Kg)
6,3	341,94	80
8	386,74	147
10	47,24	30
16	65,52	110
TOTAL		372



CALHA VC08 60x131 - (1x)
 VOLUME UNIT=3,79m³
 PESO UNIT=3,240kg



LISTA DE FERROS

Rep	POS.	Ø	UNIT (cm)	TOTAL (m)	COMPRIMENTOS
1	10	2	1000	24	
2	8	16	1000	65,52	
3	4	16	6	1142	65,52
4	5	10	2	1162	22,24
5	6	6,3	2	1174	25,48
6	8	6,3	82	108	86,56
7	8	6,3	108	108	86,56
8	8	16	VAR.	141,04	
9	10	8			